

# EVERY STUDENT DESERVES A CHAMPION

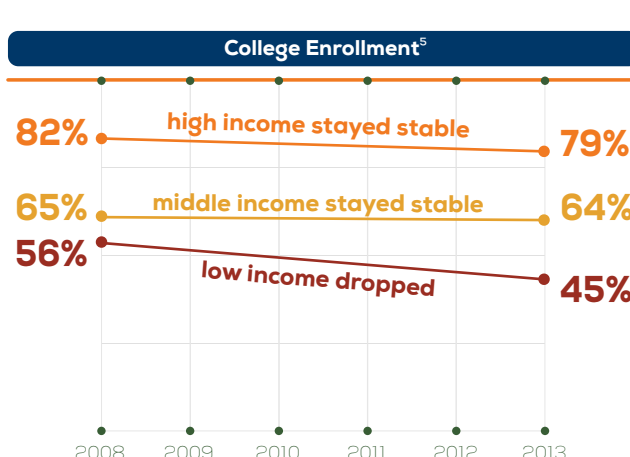
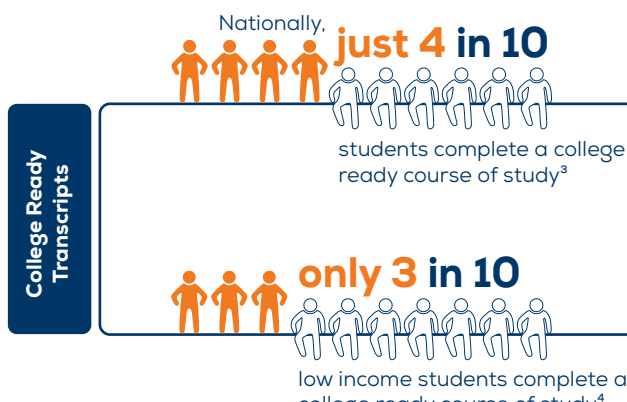
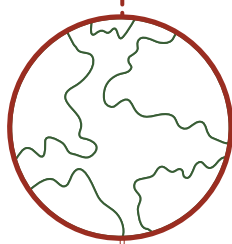


For College, Career and Life Readiness

Despite recent emphasis on ensuring all young people are prepared for higher education, college readiness and enrollment has been on the decline nationally, particularly for underrepresented students. While some may opt for alternate paths, too many young people lack the support they need to navigate the process. Every student deserves someone - usually an advisor, a counselor, or a teacher - who champions his or her readiness process. An exemplar program, made possible by College Spark Washington, demonstrates that there are ways to defy the odds and close gaps. **Personalized guidance matters.** Here's why.

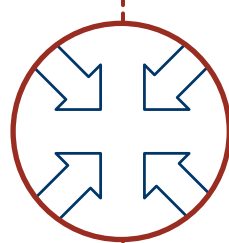
## THE WORLD IS CHANGING, YET BIG GAPS EXIST FOR STUDENTS

The world is changing and students are underprepared. Achievement gaps, particularly for low income and minority students, are unacceptable. Although high school graduation rates increased nationwide from 75% in 2009<sup>1</sup> to 83% in 2015<sup>2</sup>, data shows that students aren't ready for college, career and life.



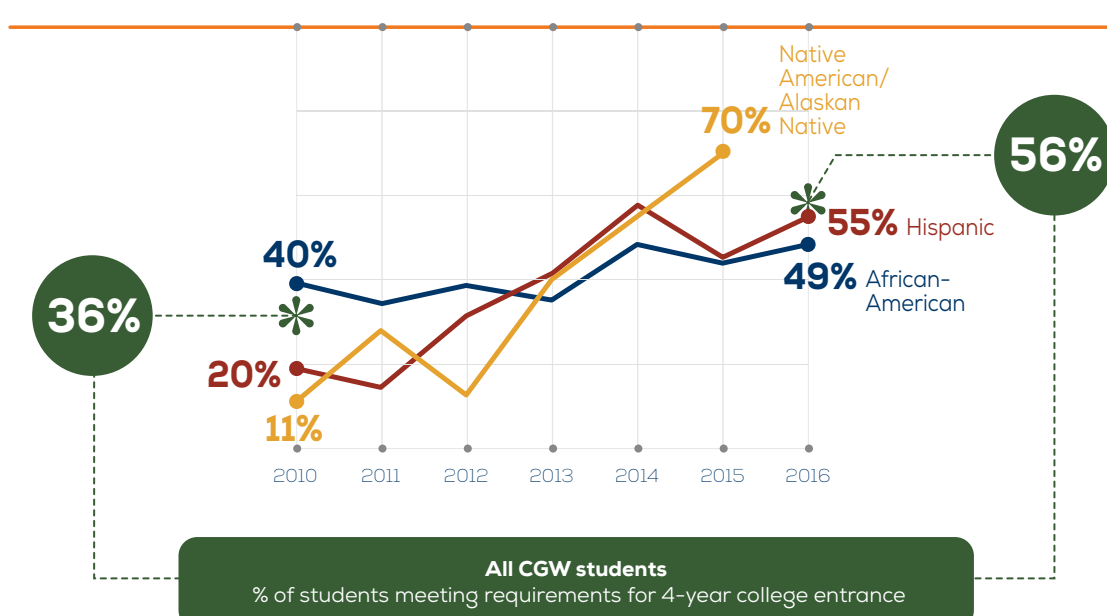
## WHAT HAPPENS WHEN STUDENTS HAVE A CHAMPION?

A personalized and student-centered approach changed the picture for students in Washington State. Student readiness data from College Spark Washington's College Readiness Initiative (CRI) showed significant improvements for the 19 schools that implemented the Career Guidance Washington (CGW) program and got results.



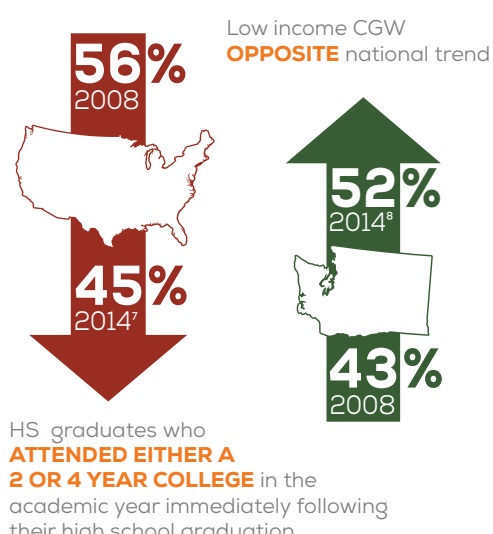
### College Ready Transcripts

**College Spark Washington CRI**  
% of Ethnic Groups Meeting High School Course Requirements for Admission to a 4-Year College<sup>6</sup>

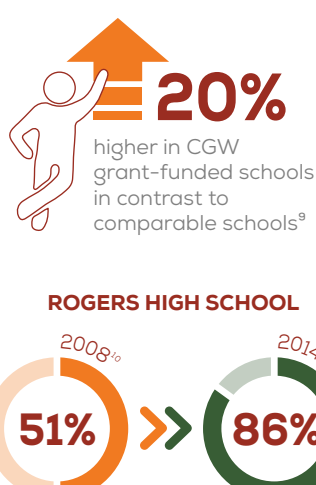


At a time when national transcript data showed that only 3 in 10 low-income students were college ready, students at CGW schools were ready at a higher rate (5 in 10) for similar, but not exact, measures.

### College Enrollment



### Graduation Rates



### School Culture



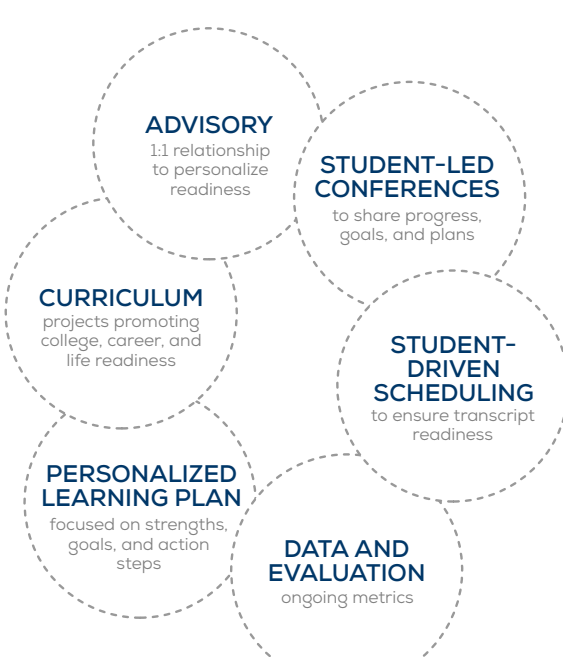
## ABOUT CAREER GUIDANCE WASHINGTON



**Student-Centered Targets**  
The Career Guidance Washington Learning experience focuses on the following themes. Graduates are:



**Design Components**  
All students in Career Guidance Washington experience the following:



**ACADEMICALLY ELIGIBLE**  
transcript readiness, requirements, Dual Credit, personalization



**FINANCIALLY LITERATE**  
understanding credit, personal finance, responsibility



**SOCIAL-EMOTIONAL LEARNERS**  
growth mindset, student agency, collaboration, communication, relationships



**SELF-AWARE**  
strengths and interest inventories



**PREPARED FOR COLLEGE**  
college awareness, admissions, financial aid



**PREPARED FOR CAREER**  
options, pathways, certifications, skills, internships

The current state of college readiness reveals a need for more targeted support, including a personalized and student-centered approach to guidance.

Career Guidance Washington is an excellent example of how programs designed to leverage the power of relationships and processes can drive engagement and increase achievement for all students.

This initiative was made possible through a partnership between College Spark Washington, the Office of Superintendent of Public Instruction (OSPI) and 19 schools from 7 districts in Washington State.

**Designed for STUDENTS.**

**Powered by PARTNERSHIPS.**